



GAT MONTHLY MEMBERSHIP PROGRESS REPORT

Results as of: 6/30/2021

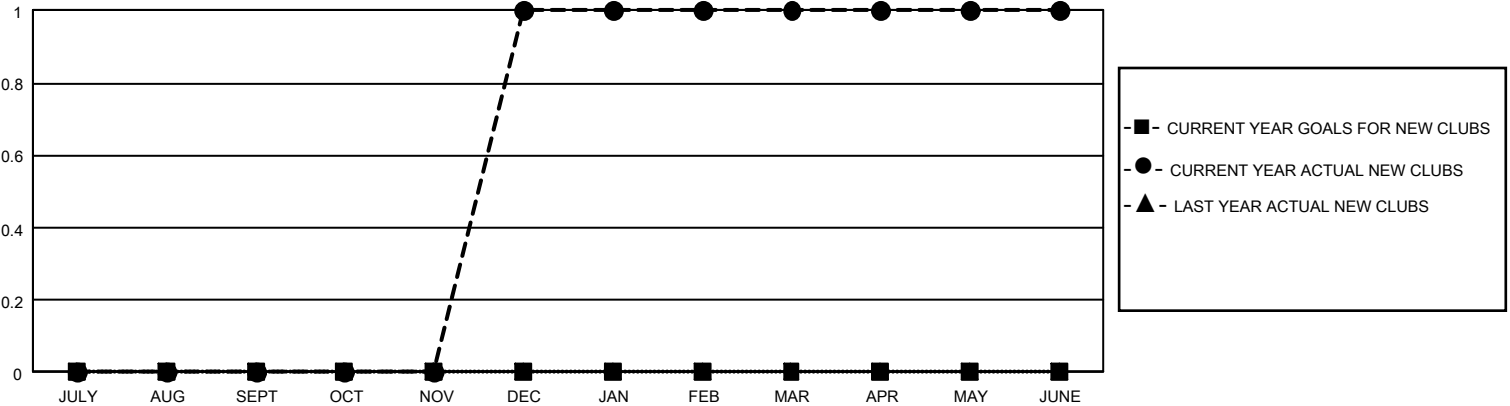
GMT Constitutional Area 1, Group H

REPORT DOES NOT INCLUDE CLUBS IN UNDISTRICTED AREAS.

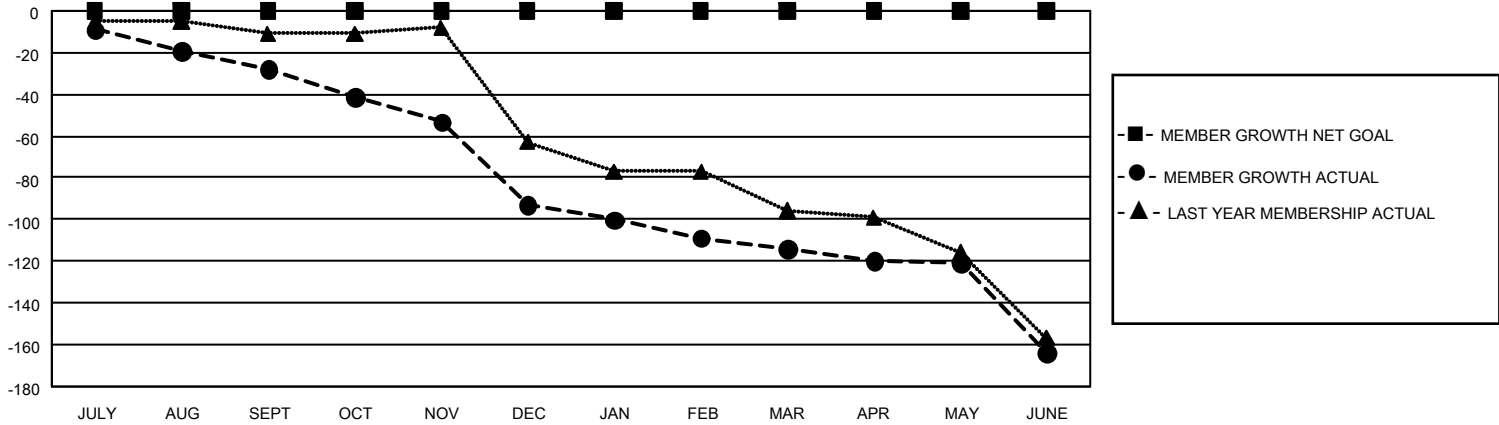
| Clubs | | | |
|-----------------------|---------------|-----------|---------------|
| RESULTS FOR 2020-2021 | | | |
| QUARTER | NEW CLUB GOAL | NEW CLUBS | DROPPED CLUBS |
| JULY/AUG/SEPT | 0 | 0 | 0 |
| OCT/NOV/DEC | 0 | 1 | 0 |
| JAN/FEB/MAR | 0 | 0 | 4 |
| APR/MAY/JUNE | 0 | 0 | 0 |

| Members | | | |
|-----------------------|------------------------|----------------------|--|
| RESULTS FOR 2020-2021 | | | |
| QUARTER | MEMBER GROWTH NET GOAL | MEMBER GROWTH ACTUAL | DROPPED MEMBERS ACTUAL (including transfers) |
| JULY/AUG/SEPT | 0 | 22 | 45 |
| OCT/NOV/DEC | 0 | 46 | 103 |
| JAN/FEB/MAR | 0 | 29 | 45 |
| APR/MAY/JUNE | 0 | 39 | 80 |

GOALS AND ACTUAL NEW CLUBS CUMULATIVE



GOALS AND ACTUAL MEMBERS CUMULATIVE



| | | |
|-------------------------|---|--|
| DROPPED CLUBS: 4 | 38 CLUBS OF 112 ADDED 1 OR MORE NEW MEMBERS | GENDER DISTRIBUTION MALE 1,440 (66.24%) FEMALE 734 (33.76%) |
| | DROPPED MEMBERS DECEASED 32 CLUB CANCELLED 13 OTHER 228 TOTAL 273 | CLICK HERE FOR CUMULATIVE MEMBERSHIP DATA |